



g) A \_\_\_\_\_ moves by hopping.

- i) cat                      ii) dog                      iii) frog                      iv) pig

h) Rats have poor \_\_\_\_\_.

- i) sense of smell      ii) speed                      iii) hair                      iv) eye sight

i) We should throw garbage \_\_\_\_\_

- i) in dustbin              ii) behind the door      iii) near the window      iv) under table

j) People eat snakes in \_\_\_\_\_.

- i) Kerala                      ii) Rajasthan                      iii) Hongkong                      iv) Goa

**Q2. Match the following.**

**(1X5=5)**

A

B

a) March in row

i) Rain

b) A water container

ii) Black ants

c) Main source of water

iii) bucket

d) A food item made of rice

iv) Flower

e) Colourful part of the plant

v) Idli

**Q3 State True or False.**

**(1X5=5)**

- a) We should eat stale food. ( \_\_\_\_\_ )
- b) We should keep our house neat and clean. ( \_\_\_\_\_ )
- c) Every family follows some special customs. ( \_\_\_\_\_ )
- d) We can live without water. ( \_\_\_\_\_ )
- e) Mother is our first teacher. ( \_\_\_\_\_ )

**Q4 Give any two examples.**

**(1X5=5)**

a) Animals that live in both water and land –

\_\_\_\_\_ ,

\_\_\_\_\_

b) Name the different parts of your house –

\_\_\_\_\_ ,

\_\_\_\_\_

c) Animals live in your house uninvited –

\_\_\_\_\_ ,

\_\_\_\_\_

d) Plants whose leaves we can crush and smell-

\_\_\_\_\_ ,

\_\_\_\_\_

e) Animals that can crawl –

\_\_\_\_\_ ,

\_\_\_\_\_

**Q5 Encircle the odd one out.**

**(1X5=5)**

- a) parrot pig pigeon crow
- b) river hand pump well sand
- c) mother father tree brother
- d) car bedroom kitchen bathroom
- e) chappati frog kheer bread

**Q6 Name the following.**

**(1X3=3)**

- a) The National bird of India \_\_\_\_\_.
- b) The solid form of water \_\_\_\_\_.
- c) The king of forest \_\_\_\_\_.

**Q7 Answer the following Questions.**

**(1X2=2)**

- a) How do you keep your house neat and clean?

Ans- \_\_\_\_\_

\_\_\_\_\_

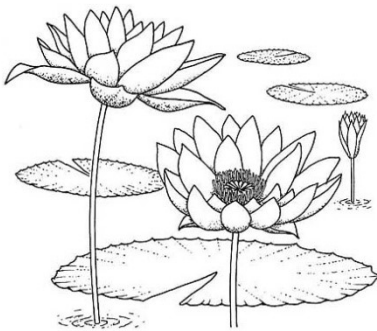
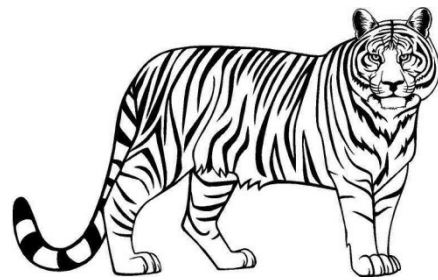
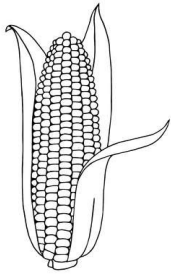
b) Why do we need house?

---

---

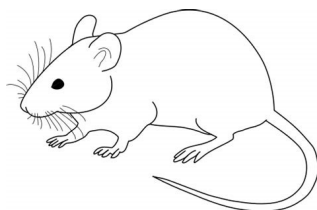
Q8. Identify the pictures.

(1X5=5)



\_\_\_\_\_ flower

\_\_\_\_\_ bird



\_\_\_\_\_